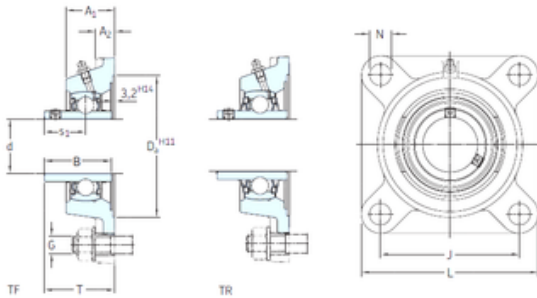




FN Bearing Machinery Equipment Co.,Ltd

SKF FY 40 WF bearing units

Bearing No. FY 40 WF



FY 40 WF Bearing 2D drawings and 3D CAD models

Bore Diameter	40 mm
d	40 mm
Da	115,9 mm
s1	34,9 mm
A1	38,5 mm
B1	56,3 mm
G	12 mm
J	101,5 mm
L	130 mm
N	14 mm
T	58,9 mm
A2	14 mm
Weight	2,05 Kg
Basic dynamic load rating (C)	30,7 kN
Basic static load rating (C0)	19 kN
Fatigue load limit (Pu)	0,8
Category	Mounted Units & Inserts
Inventory	0.0
Manufacturer Name	SKF
Minimum Buy Quantity	N/A
Weight / Kilogram	1.975
EAN	7316570774450
Product Group	M06110
Housing material	Cast iron
D _a	115.9 mm
D _{b1}	98 mm



FN Bearing Machinery Equipment Co.,Ltd

D_{b2}	106 mm
A	38.5 mm
A_1	14 mm
A_3	3.2 mm
A_5	23.5 mm
B_1	56.3 mm
s_1	34.9 mm
R_G	1/4-28 UNF
R_1	25.5 mm
D_N	6.5 mm
SW_N	7 mm
G_N	1/4-28 SAE-LT
J_6	118 mm
J_7	34 mm
N_4	4 mm
Basic dynamic load rating C	30.7 kN
Basic static load rating C_0	19 kN
Fatigue load limit P_u	0.8 kN
Limiting speed	4800 r/min
Mass bearing unit	1.85 kg
Thread grub screw G_2	M10x1
Hexagonal key size for grub screw N	5 mm
Recommended tightening torque for grub screw	16.5 N · m
Recommended diameter for attachment bolts, mm G	12 mm
Recommended diameter for attachment bolts, inch G	0.5 in
Housing	FY 508 M
Bearing	YEL 208-2F
End cover	ECY 208